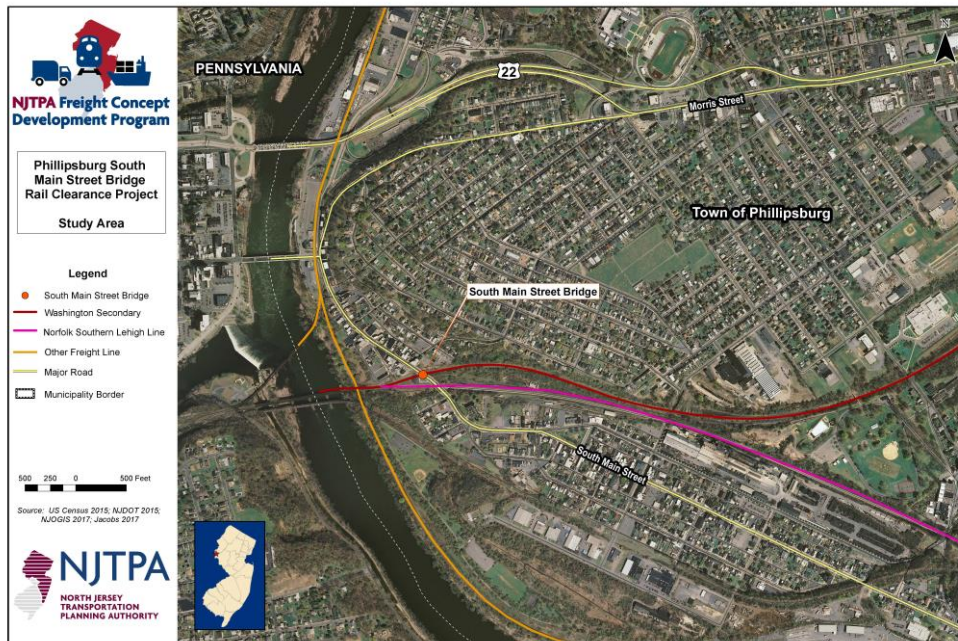


NJTPA Pilot Freight Concept Development Program

Phillipsburg South Main Street Bridge Rail Clearance Project



Draft Project Purpose and Need

The purpose of this project is to provide freight transportation infrastructure that meets current industry standards in order to promote economic development and optimize freight movement particularly with the existing vertical clearance limitations of the South Main Street Bridge over the Washington Secondary/Morristown Line in Phillipsburg.

The Project

Develop and assess alternatives to address the vertical clearance constraint imposed on rail traffic by the overhead South Main Street Bridge to allow passage of larger freight rail cars that have become the new standard for freight rail.

Background

The Washington Secondary/Morristown Line Corridor extends from Phillipsburg to Morristown and provides rail freight access to businesses in Warren and Morris Counties. The project area involves the segment of the Washington Secondary located to the north of the central business district in Phillipsburg, Warren County. Economic

redevelopment initiatives and previous studies have recognized the need to support existing rail freight customers and to explore attracting new customers along the Washington Secondary corridor. The national standard for freight rail access is defined by the dimensions (Plate "F" which is 17 feet high and 10.5 feet wide) and weight of a railcar (286,000 pounds or 286K loaded railcar). The Washington Secondary corridor cannot currently support this standard. The primary obstacle is a vertical constraint under the South Main Street Bridge.

Further Information

Jakub Rowinski, Project Manager, NJTPA

Email: jrowinski@njtpa.org

www.phillipsburgrailstudy.org

Follow @Pburgrailstudy on Twitter

Schedule

- This three-year effort began in December 2016
- Final Purpose & Need Statement, November 2018
- Selection of Preliminary Preferred Alternative, June 2019
- Concept Development Report Complete, December 2019